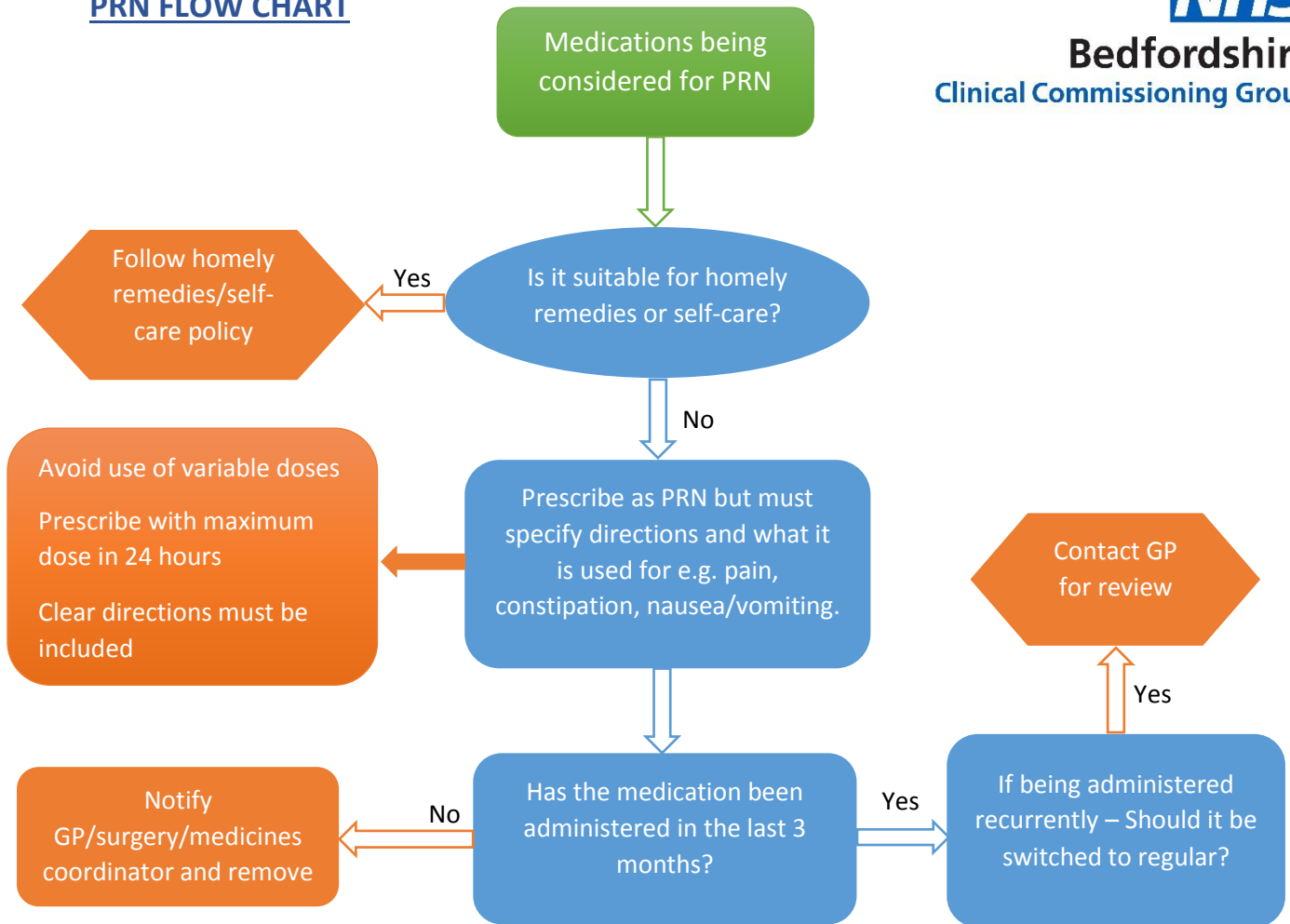


## PRN FLOW CHART



### PRN Best Practice:

If the medication is prescribed as PRN:

- Should be in original packs
- Quantities should be carried forward on MARs sheet month to month
- Quantities/stock & expiry dates, should be checked before reordering
- MARs chart should be completed correctly with codes – e.g. not required or refused
- The opening date should be recorded on the label as appropriate e.g. for creams, pumps, eye drops
- Should not be automatically disposed of at the end of the month
- Expiry dates should be checked regularly

### Prescribing:

If PRN prescription is being considered, prescribers should:

- Avoid use of variable doses
- Prescribe with maximum dose in 24 hours
- Clear directions must be included
- Include indication in the directions

### Expiry dates (once opened):

- Pumps (emollients) – 6 months
- Tubs (creams/emollients) – 3 months
- Eye/Ear/Nasal drops – 1 month
- Oral Liquids – 6 months (unless otherwise stated)
- Tablets – check original pack

\*Always check original pack for expiry dates \*